

## Appendix B Upgrade WinPAC's ISaGRAF Driver to Newer Version

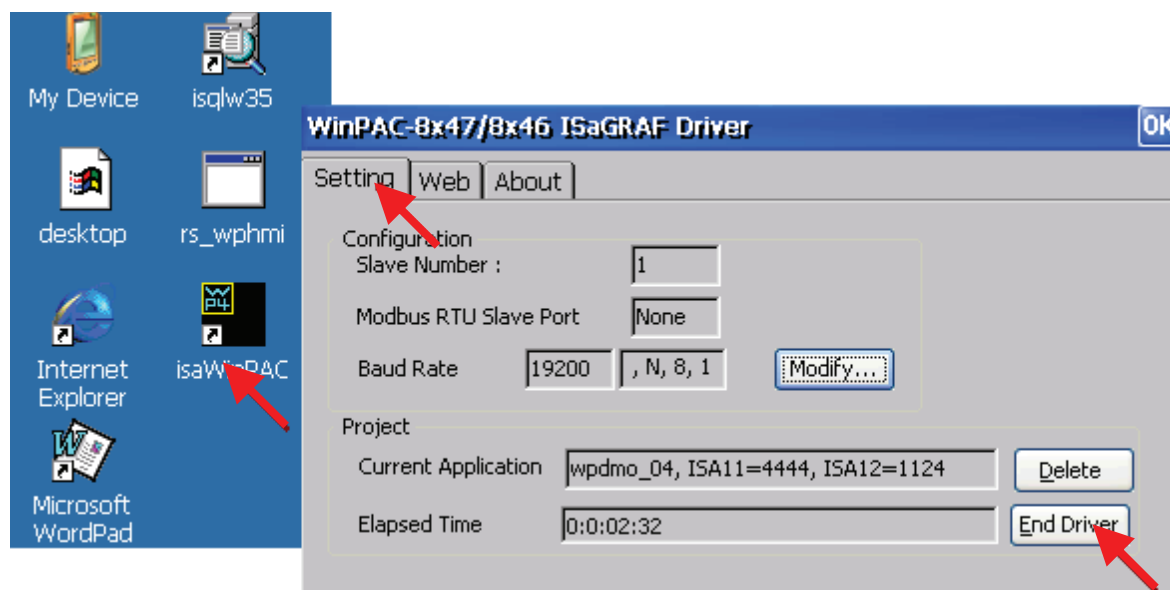
### **Note:**

If you have purchased WP-8xx7, the ISaGRAF Driver is already installed with license when shipping out. You don't need to install it. However if you want to upgrade to newer version, you may upgrade it by yourself.

The WinPAC ISaGRAF driver can be obtained in the WinPAC-8xx7 CD-ROM:  
[\napdos\isagraf\wp-8xx7\driver\wp-8x47\<version Number>\](#)

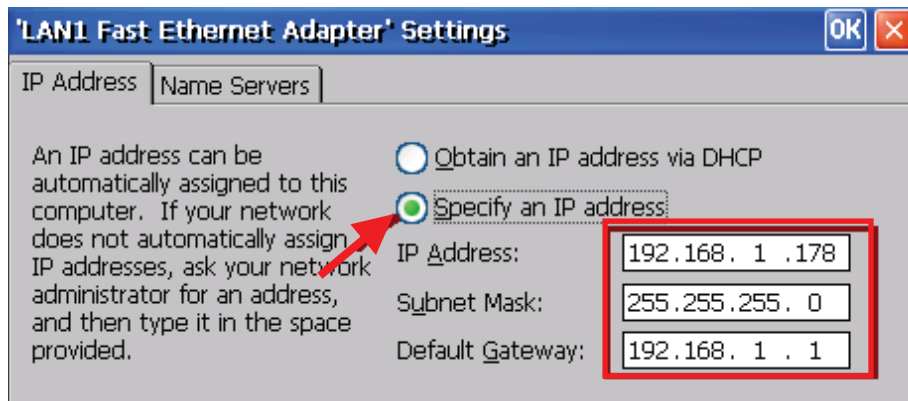
EX: version 1.01 is located at [\napdos\isagraf\wp-8xx7\driver\wp-8x47\1.01\](#)  
Or download it from  
<http://www.icpdas.com/products/PAC/i-8000/isagraf.htm> > Driver

1. If your WinPAC is WP-8xx7 / WP-8xx6, please stop "WinPAC ISaGRAF Driver" first. (Click on "End Driver" to stop it.) However if it is WP-8xx1/8xx9 (WinPAC without ISaGRAF license), please goto step 2.

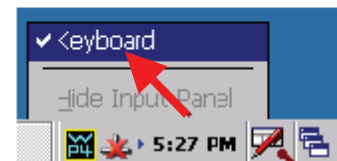
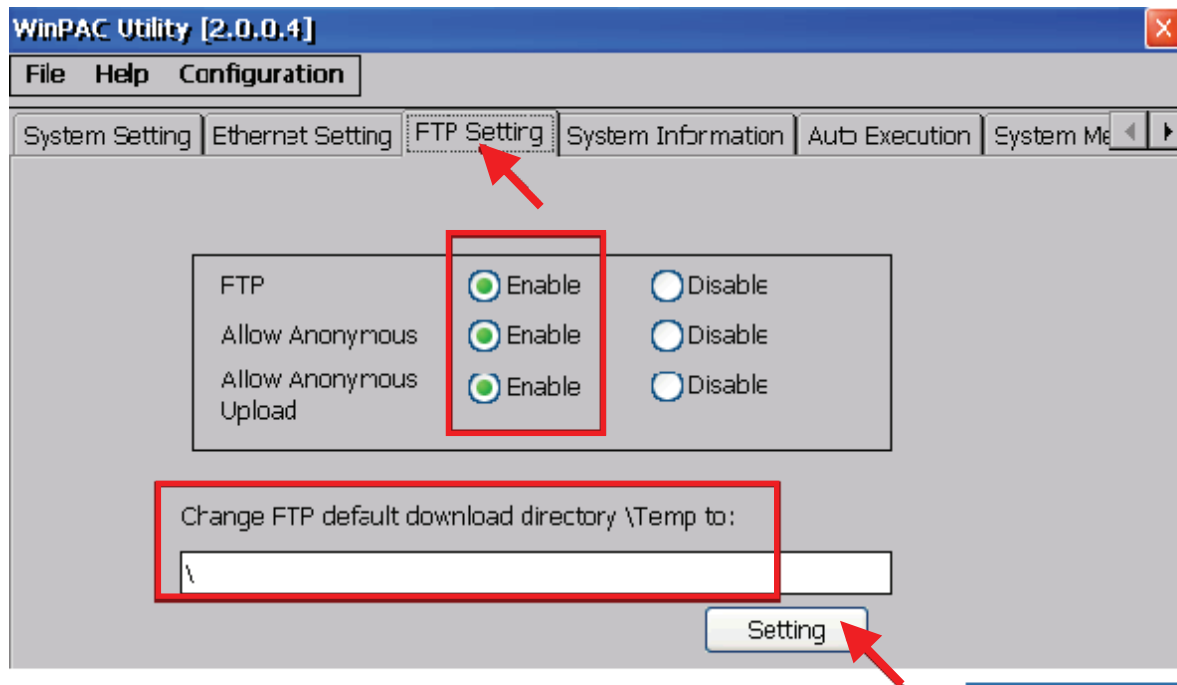


2. Set up WinPAC 's IP, Mask, FTP directory & Auto-execute

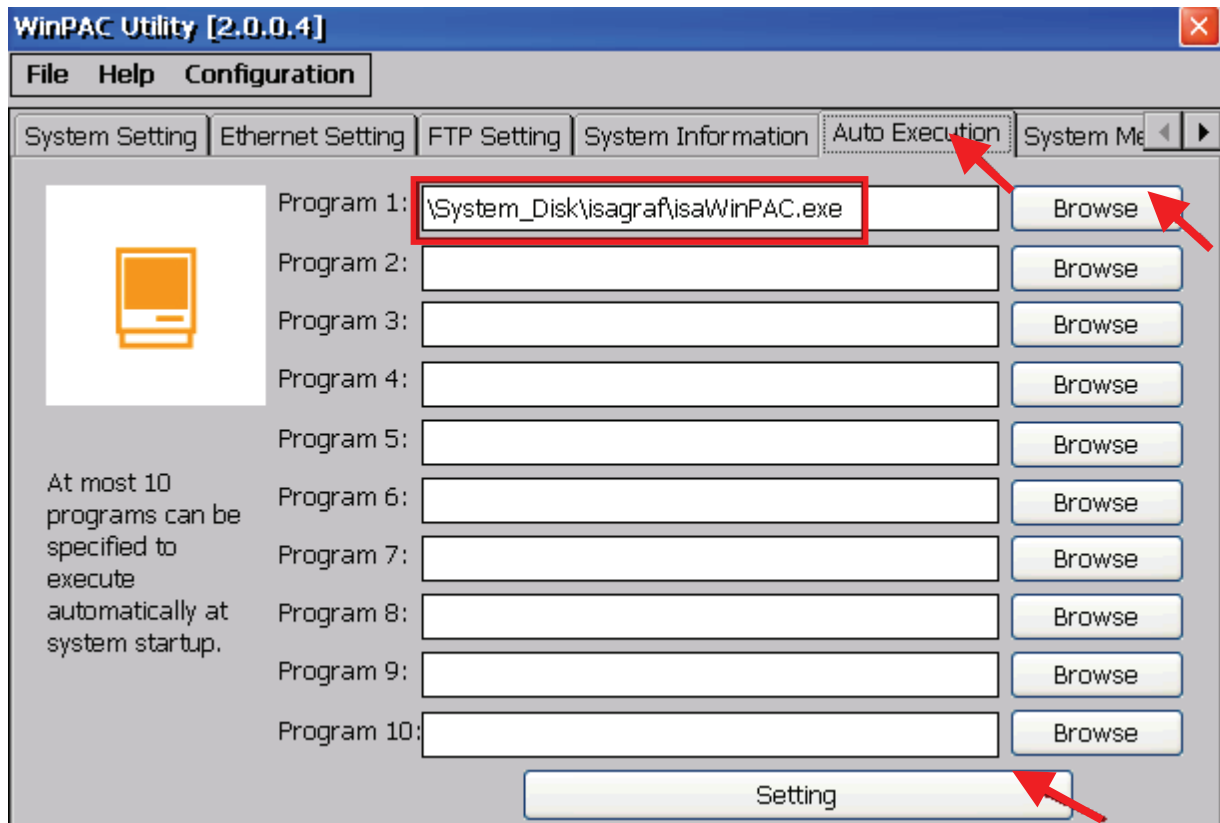
- A. Please create a folder "isagraf" inside "System\_Disk" folder in your WinPAC controller. Then it will be \System\_Disk\isagraf\
- B. Please run "Start" – "Setting" – "Control Panel" on the WinPAC, then double click on "Network and Dial-up Connections". Then click on "LAN1" and "LAN2". Set your WinPAC's IP address & its Subnet Mask. (Please always set as Fixed IP for ISaGRAF application, No DHCP)



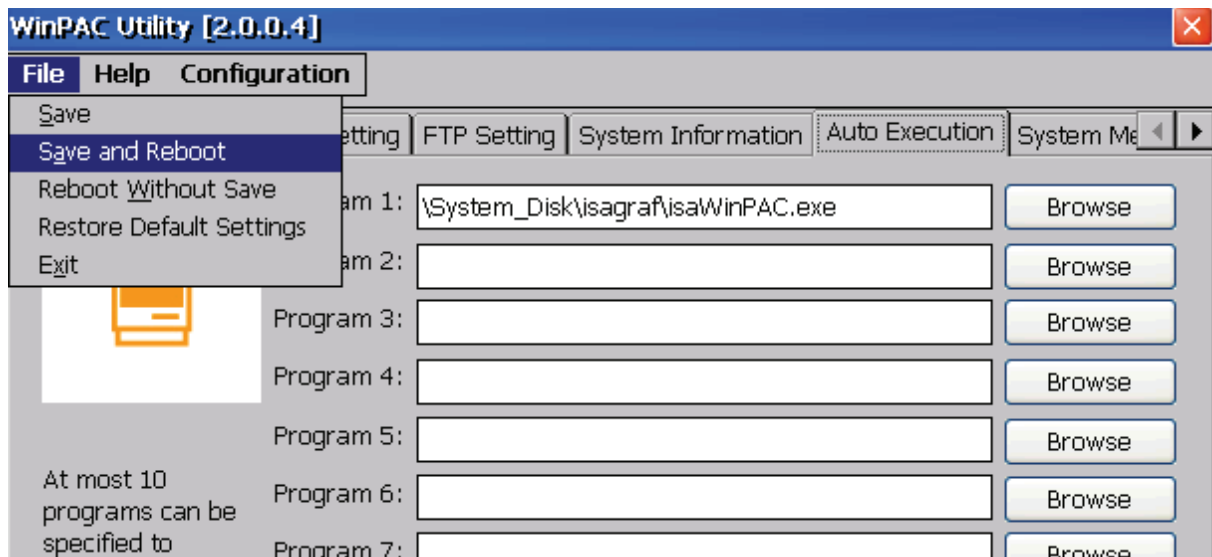
C. Please run “Start” – “Programs” – “WinPAC Utility”. Set FTP directory to the root dircetory “\” . Then check all three ftp options as “Enable”. Remember to click on “Setting”. Then click on “Auto Execution” to do the next step



- D. Please click on “Browse” to select or type  
“\System\_Disk\isagraf\isaWinPAC.exe” and click on “Setting”

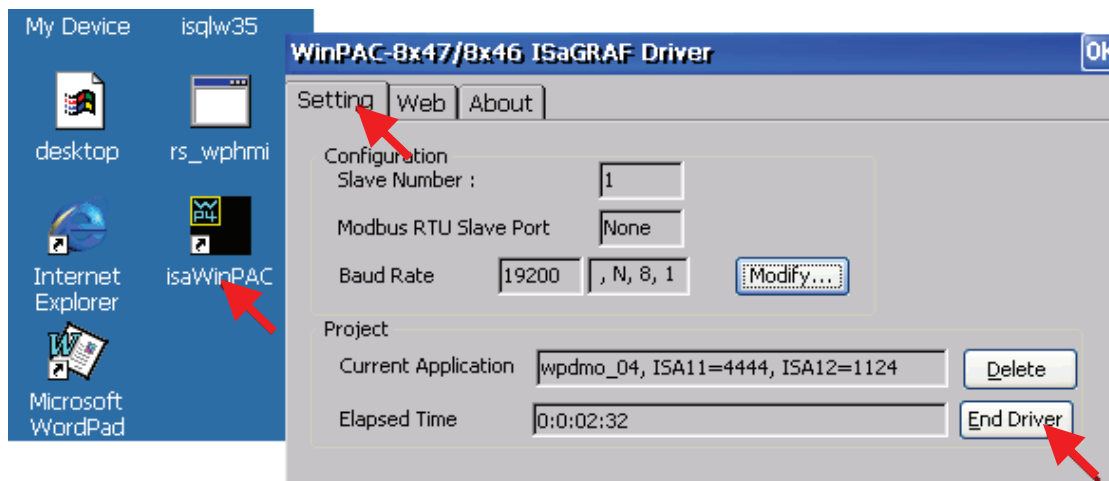


- E. Run “Save and Reboot” to store the setting in step A thru. D and then it will auto-reboot the WinPAC once.



3. After the WinPAC reboot successfully, please stop the ISaGRAF driver again .  
(The original WP-8xx1 / 8xx9 doesn't have the ISaGRAF driver running, only the WP-8xx7 / 8xx6 have it)

**Note: If the ISaGRAF driver is still running, the files copied are failed even your eyes tell you it is successful.**



4. Download the files from PC to WinPAC directory “**System\_Disk\isagraf**” :  
(The files listed below are the driver of version 1.16. The files may different in different version.)

isaWinPAC.exe, rs_wphmi.exe
mscorlib.dll, QuickerNet.dll, Quicker.dll, login.dll, main.dll, whmi_filter.dll
isaWinPAC.lnk, isa_el.dll and sharedmemory.dll
<b>(and “license.bin” if your WinPAC is WP-8xx1/8xx9)</b>

And then re-cycle your PAC’s power.

You may use PC's ftp utility to download these files.

Please open Internet browser and then type in <ftp://<IP address>>,  
for ex. [Ftp://192.168.1.178](ftp://192.168.1.178) , browse it to the \System\_Disk\isagraf .  
Then copy all of them & past it.

Then remember to re-cycle your WinPAC's power again. After it re-boot again, it will have the new ISaGRAF driver running. You can check if the version is correct.

